



95 Skibo Court, Dunfermline, KY12 7EW
Offers In The Region £95,000





Situated in sought after city centre location within walking distance of the city centre, well-placed for access to main amenities, schools, bars, restaurants and Dunfermline train station. The property is offered in good condition and would ideally suit first time buyers and investors as gives a good annual yield. The subjects briefly comprises: secure entry phone system, well maintained stairwell, hallway/attic, living room, fitted kitchen, bedroom with fitted wardrobes and bathroom. The property benefits from electric central heating and double glazing. Lovely views over the city. Private residents' allocated parking. Communal gardens/grounds.





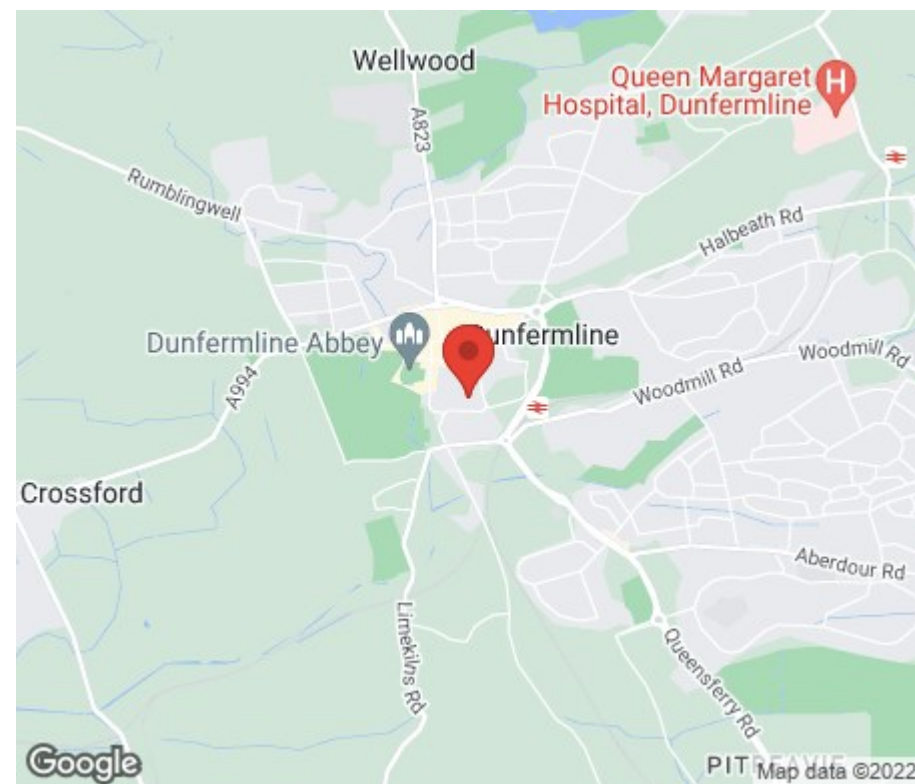
LOCATION

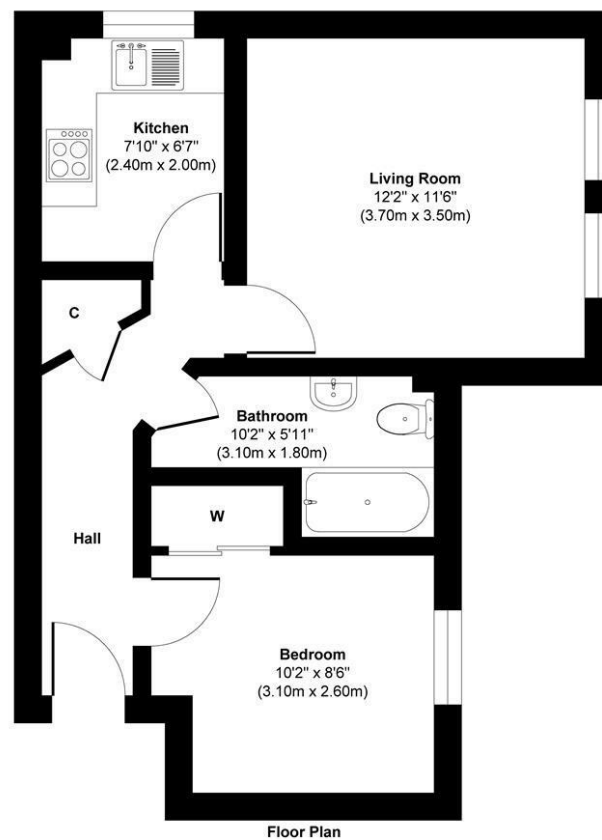
The ancient capital of Dunfermline won its bid to have official status city in May 2022, as part of the civic honour's competition to celebrate the Queen's platinum jubilee. The City of Dunfermline is of considerable historic interest and is the resting place of King Robert the Bruce. Carnegie's Birthplace museum, the Abbey and Abbot House reflect the historic interest of the city, whilst recent developments have seen Dunfermline move into the modern era with Carnegie Museum and Library. Dunfermline is located approximately five miles from the Forth bridges and is therefore particularly popular with commuters to Edinburgh and many parts of the central belt with easy access to the M90 motorway with its direct links to Edinburgh, Perth and Dundee and across the Kincardine Bridge by way of motorways to Stirling, Glasgow and the West. It benefits from a full range of shops, social and leisure facilities and educational establishments. The local railway stations provide a regular service to Edinburgh with intercity links to other parts of the UK. There are regular and convenient bus services both local and national.

EXTRAS INC IN SALE / AGENTS NOTE

All floor coverings, blinds, bathroom and light fittings together with integrated appliances and shed.

From 1st February 2022, residential properties in Scotland are required by law to have installed a system of inter-linked smoke alarms, carbon monoxide detectors and heat detectors (the "inter-linked system"). No warranty is given that any interlinked system has been installed in this property and interested parties should make their own enquiries. The owner will not warrant the working order of the fixtures and fittings or appliances which are included in the sale price or white goods.





Floor Plan



This floor plan is for illustrative and marketing purposes only and is to be used as a guide only. No details are guaranteed on measurements, floor areas, or orientation and do not form any agreement. No liability is taken for error, omission or misstatement. A party must rely upon its own inspection(s). Created by 9AM Media

Morgans

PROPERTY

SOLICITORS | PROPERTY

33 East Port, Dunfermline, Fife, KY12 7JE

Tel: 01383 620222 Fax: 01383 621213

www.morganlaw.co.uk



espc

s1homes.com

rightmove

Zoopla.co.uk

onTheMarket.com



AGENTS NOTE These particulars do not form part of any contract and the statements or plans contained herein are not warranted nor to scale. Approximate measurements have been taken by electronic device at the widest point. Services and appliances have not been tested for efficiency or safety and no warranty is given as to their compliance with any Regulations. No movable items will be included in the sale.